

Camshelving® Wall Shelves And Storesafe® Shelf Extenders

Wall Shelves

- Expand storage space in kitchens, above work stations and sinks.
- Features virtually indestructible I-beam supports that hold up to 150 lbs. (68 kg) per shelf.
- Durable polypropylene withstands temperatures up to 190°F (88°C), and will not rust or corrode.
- Snap fit rail design allows shelves to snap on and off for easy cleaning.
- 2" (5 cm) backsplash and marine front edge controls spills and cross contamination.

Shelf Extenders

- Convert empty wall space into a functional storage area.
- Use with or without Camshelving Wall Shelves.
- Peg strips withstand temperatures up to 190°F (88°C), and will not rust or corrode.

Wall Shelf Color: Speckled Gray (480).

Extender Peg Strip Color: Black (110).

Wall Shelf Kits are covered by the following U.S. Patents D 508,646S & D 512,867 S.



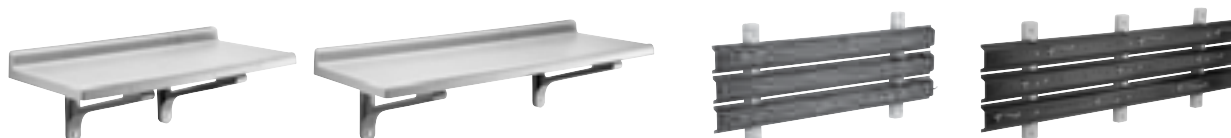
Shelf Extenders ship in one carton with all hardware and includes:

LENGTH	PEG STRIPS	BRACKETS	HOOKS
36"	3	2	6
48"	3	3	9



CODE	CSWS1436SK	CSWS1448SK	CSWS1436VK	CSWS1448VK
DESCRIPTION	36" x 14" Wall Shelf, Solid	48" x 14" Wall Shelf, Solid	36" x 14" Wall Shelf, Vented	48" x 14" Wall Shelf, Vented
EXTERIOR DIMENSIONS	L 36" x W 14" x H 13½"	L 48" x W 14" x H 13½"	L 36" x W 14" x H 13½"	L 48" x W 14" x H 13½"
LIST PRICE EACH	\$ 145.15	\$ 166.65	\$ 145.15	\$ 166.65

Case Pack: 1



CODE	CSWS1836SK	CSWS1848SK	CSWS36EK	CSWS48EK
DESCRIPTION	36" x 18" Wall Shelf, Solid	48" x 18" Wall Shelf, Solid	36" Shelf Extender	48" Shelf Extender
EXTERIOR DIMENSIONS	L 36" x W 18" x H 13½"	L 48" x W 18" x H 13½"	L 35½" x W 2" x H 15½"	L 47½" x W 2" x H 15½"
LIST PRICE EACH	\$ 166.65	\$ 182.75	\$ 205.00	\$ 305.00

Case Pack: 1